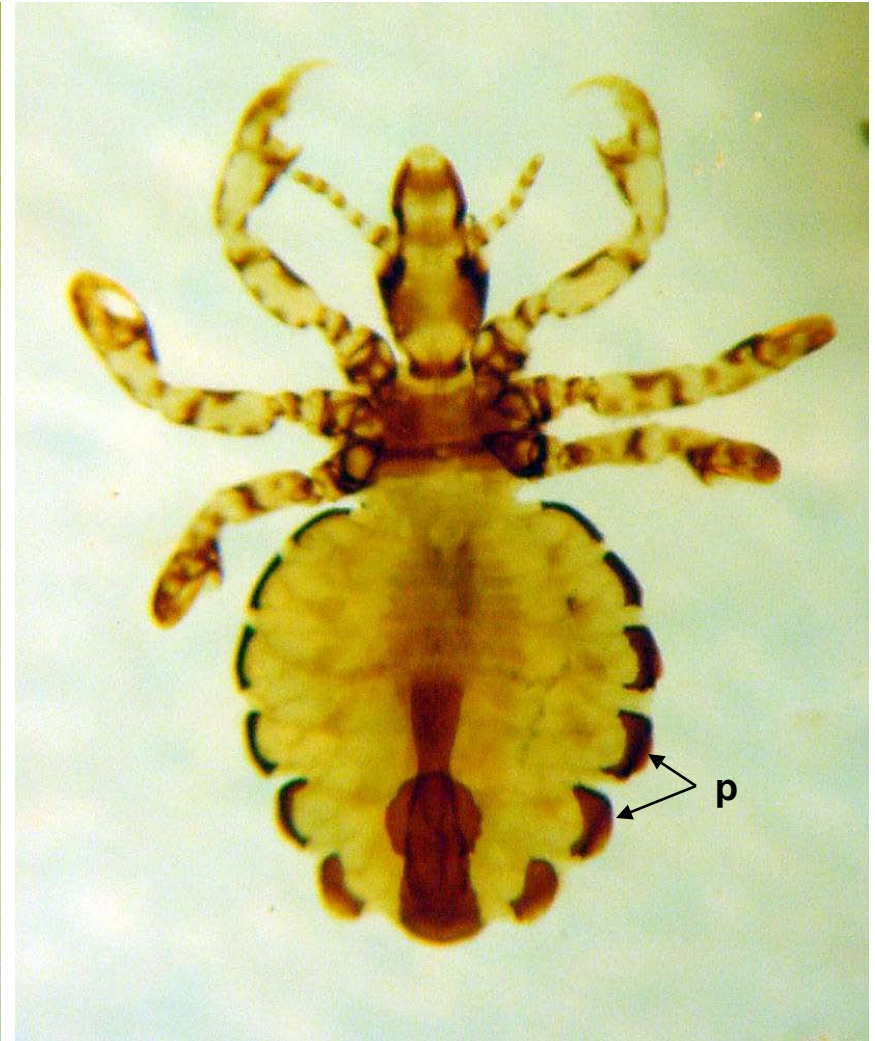
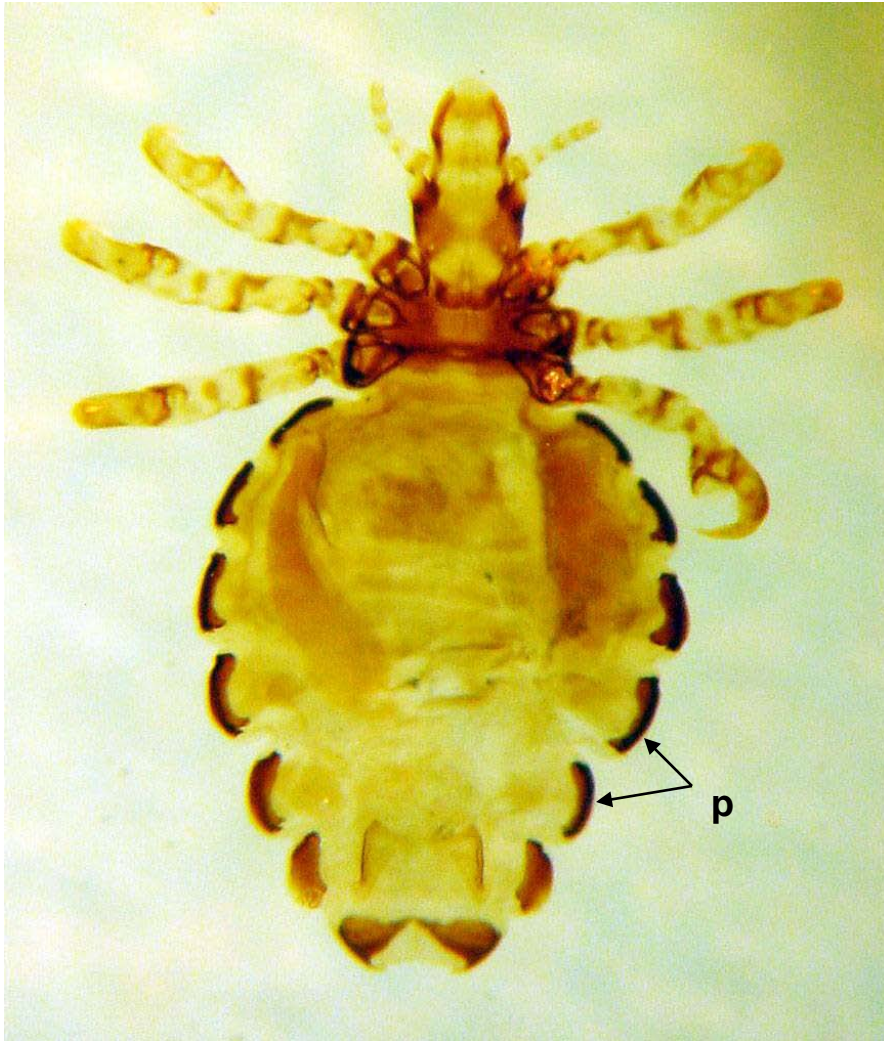
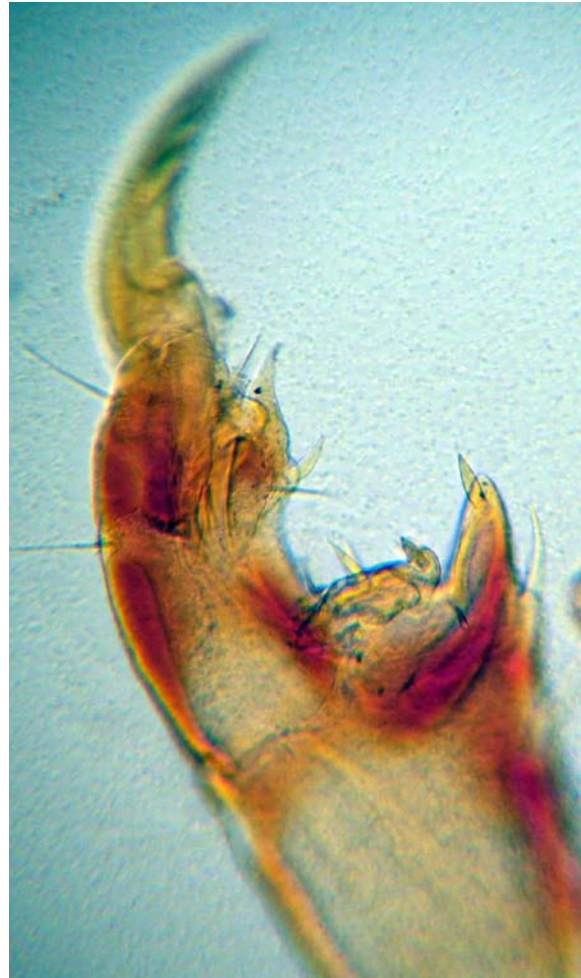
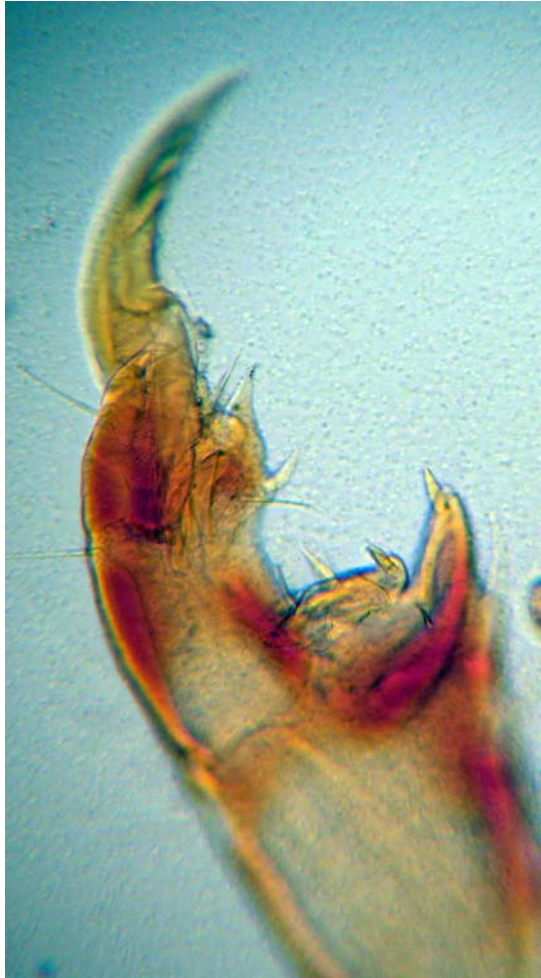


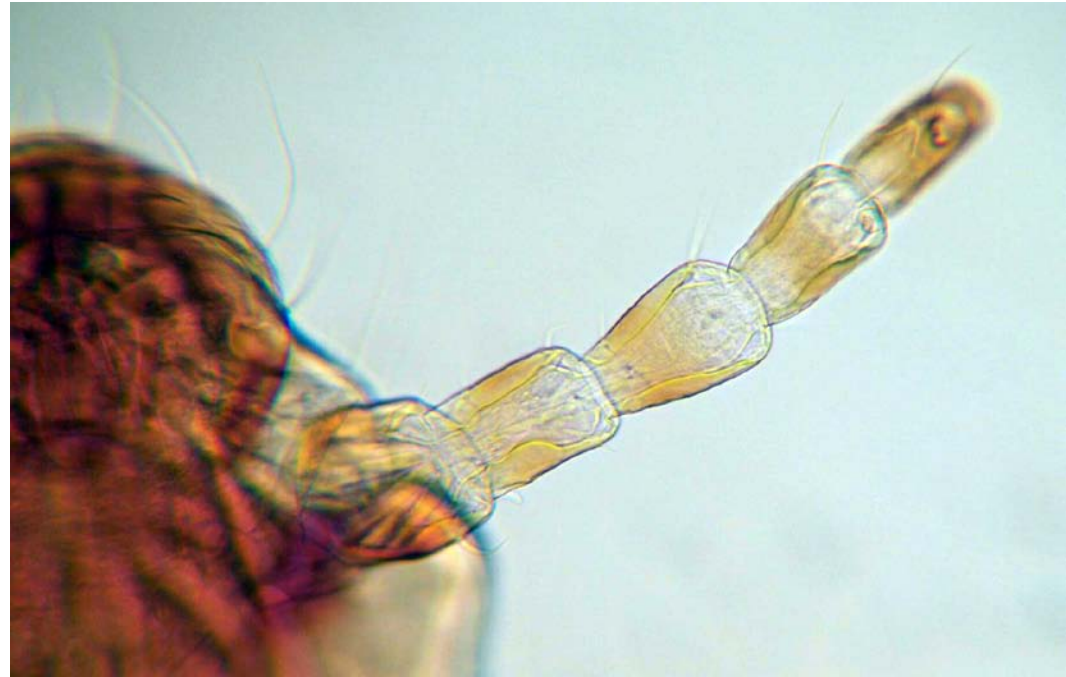
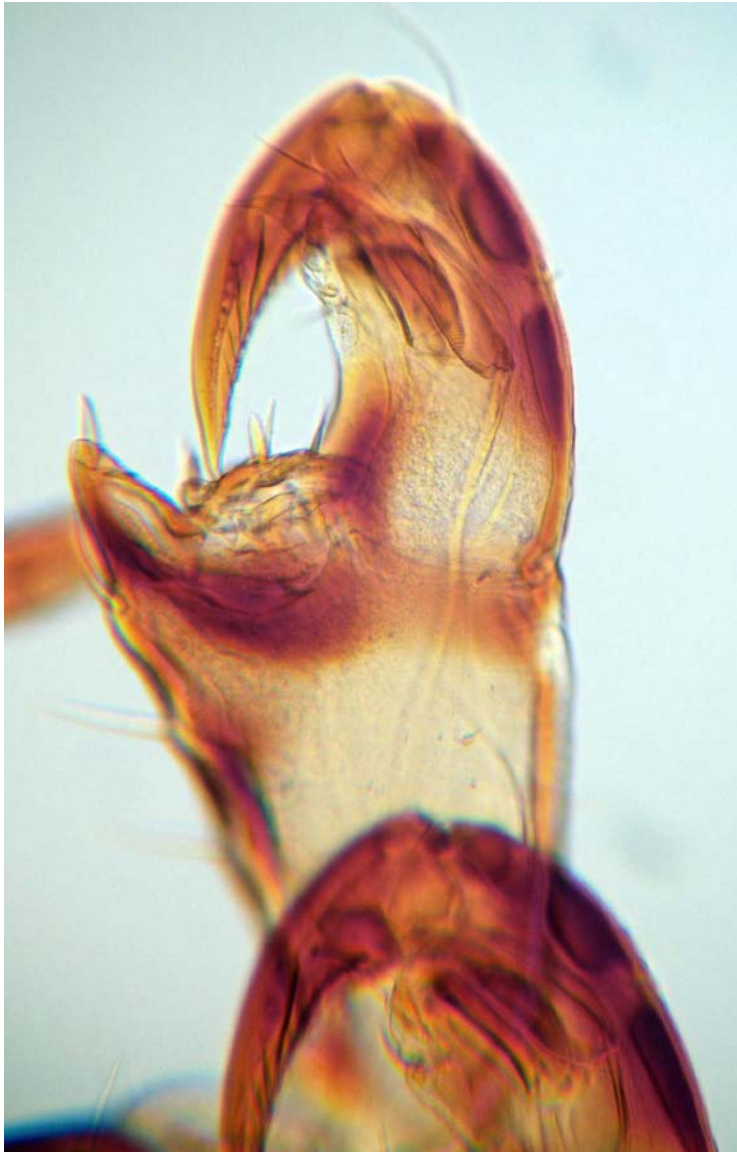
Hematopinus suis; female (left); male (right).
Note strongly developed paratergal plates (p).



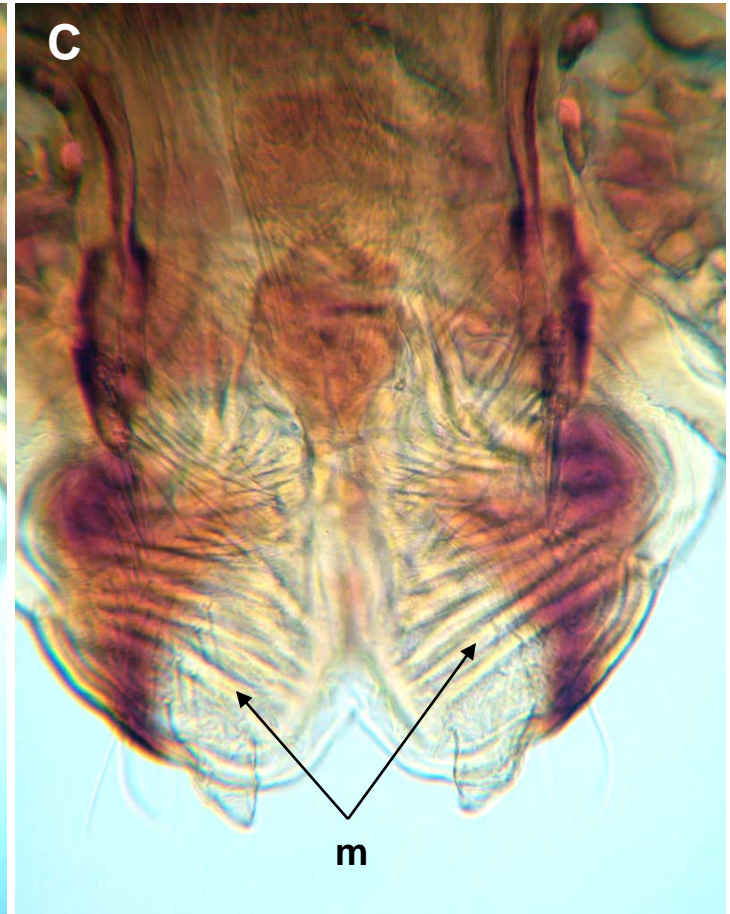
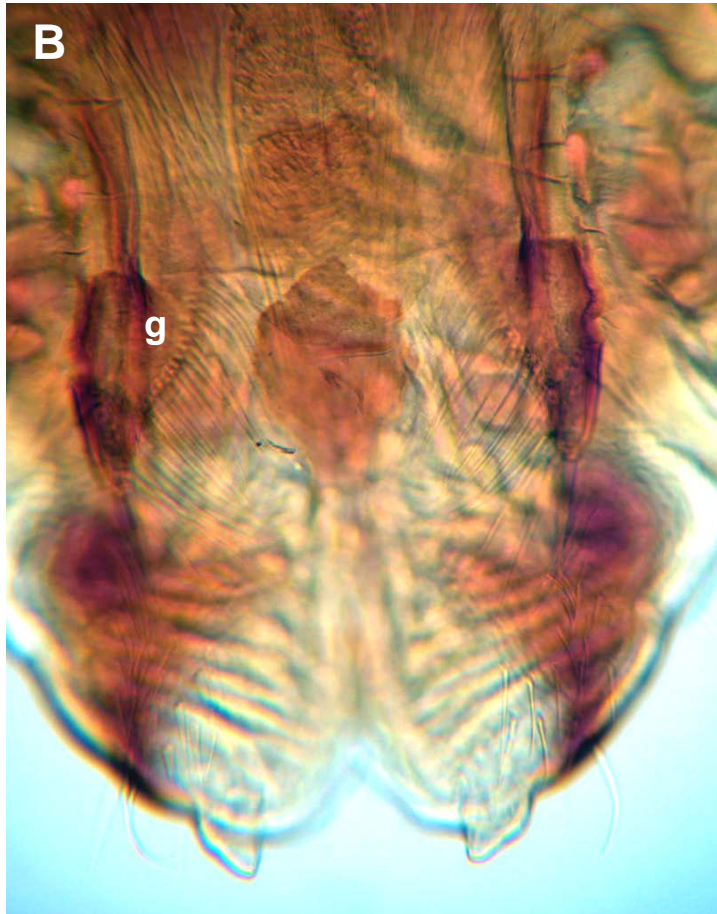
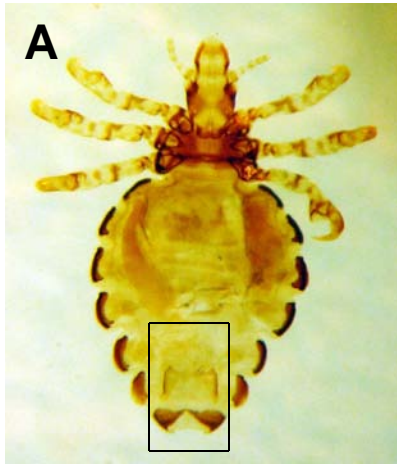
Hematopinus suis; claw of 1st leg segment (3 depths of field).



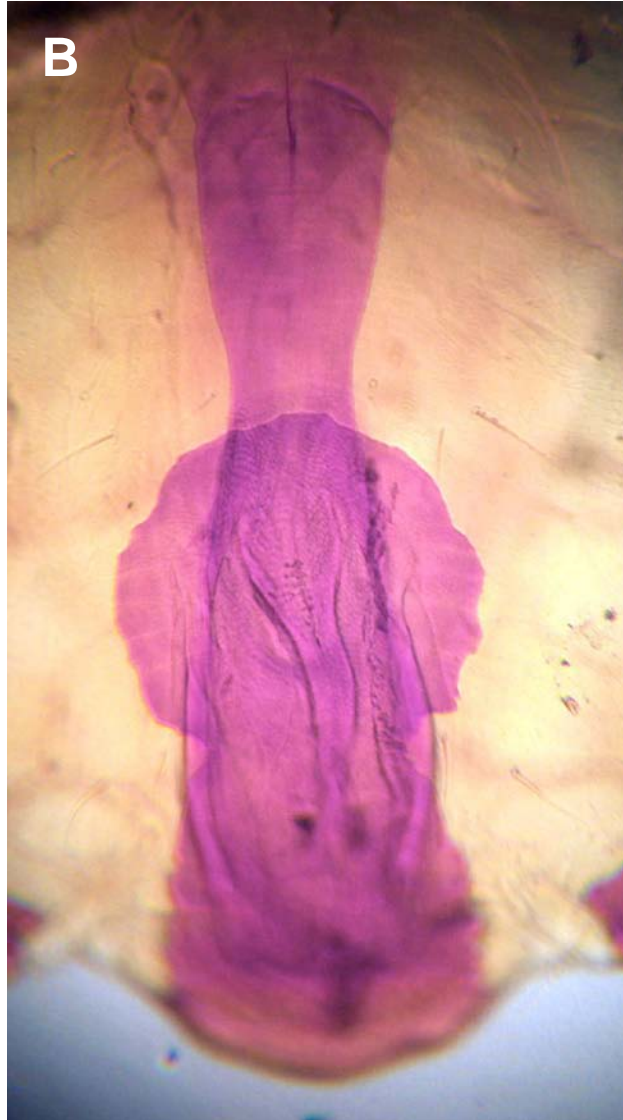
Hematopinus suis; claw of 1st leg segment (left), and
“filamentous” antenna (right).

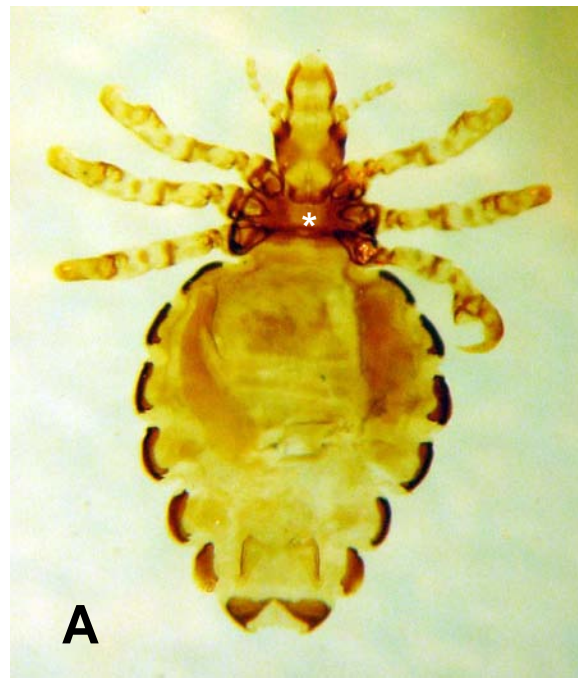


Hematopinus suis; female genitalia. Box in A enlarged in B and C (two different depths of fields). Legend: g, gonopod; m, muscles (presumably controlling opening of vulva).



Hematopinus suis; male genitalia. Box in A enlarged in B and C (two different depths of fields).

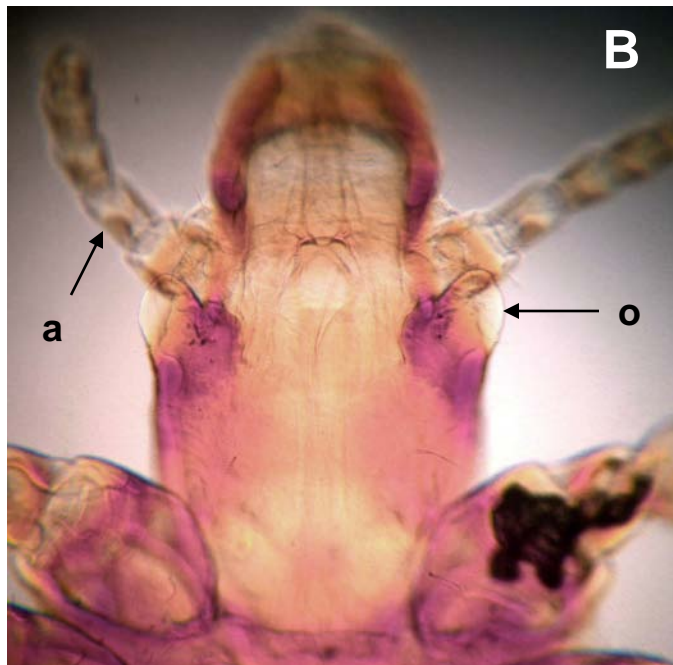




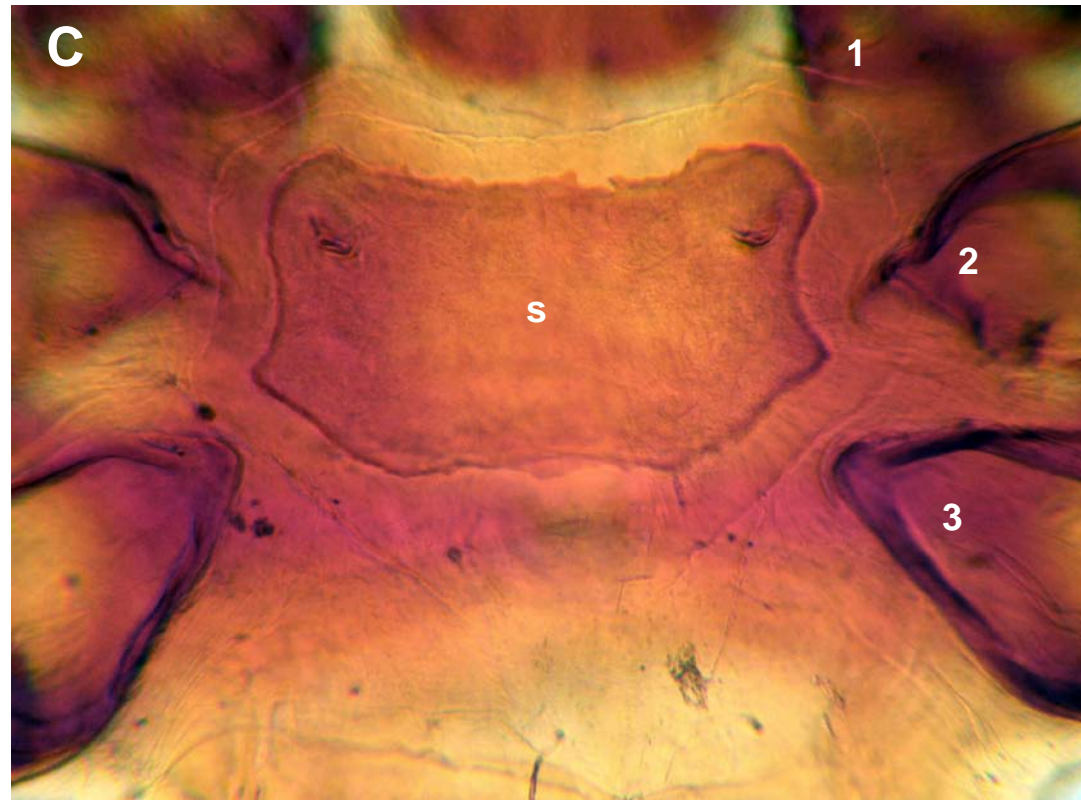
A

Hematopinus suis: A, entire (asterisk indicates sternal plate); B, head; C, sternal plate.

Legend: a, antenna; o, ocular point; s, sternal plate. 1st, 2nd, and 3rd coxae indicated by 1, 2, and 3.

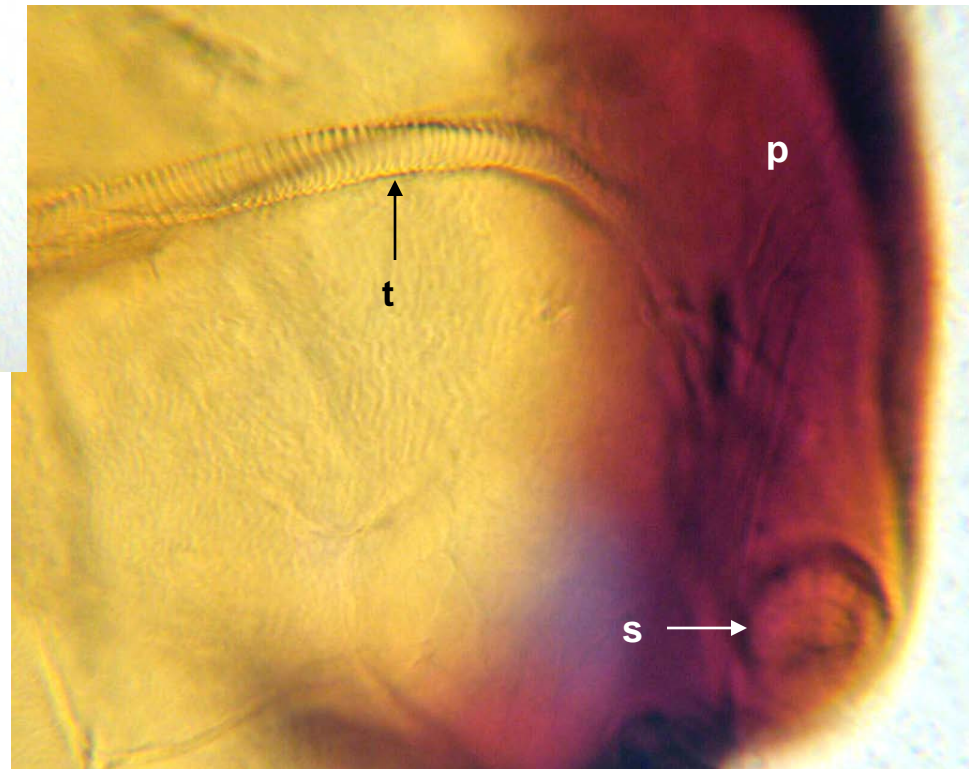
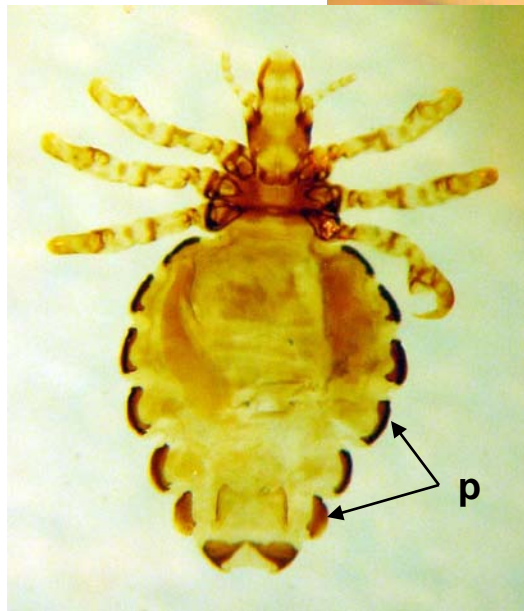
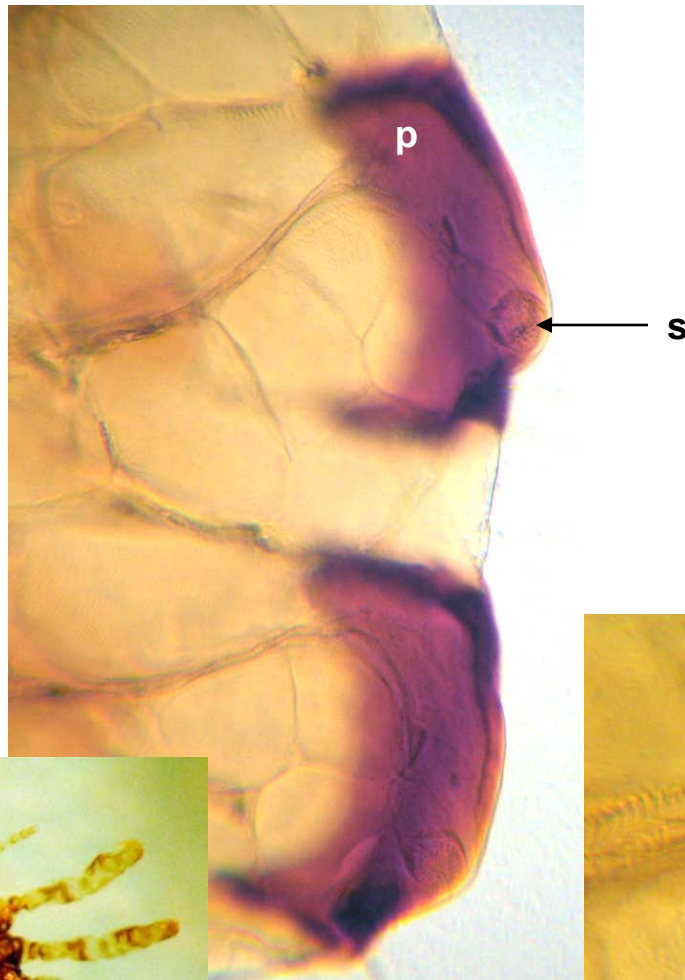


B

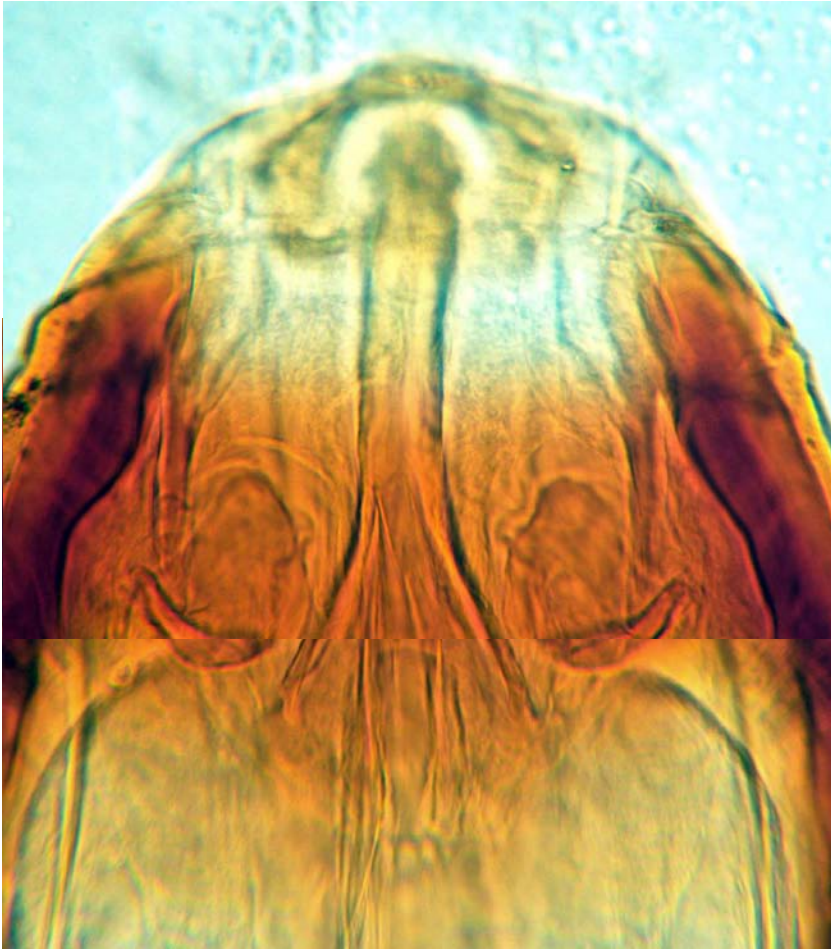


C

Hematopinus suis. Legend:
p, paratergal plates; s,
spiracle; t, trachea.



Hematopinus suis: piercing/sucking mouth parts (different views).



Hematopinus suis: piercing/sucking mouth parts.

